

PACK JAMPACK

VOL. 1 VOL. 1 VOL. 1 VOL. 1

# JAMPACK

6 7 8 9 0 1 2 3 4 5 6 7

PLAYABLE DEMOS PLAYABLE DEMOS

- S Super Puzzle Fighter II Turbo™™
- T The Lost World: Jurassic Park™™
- H Herc's Adventures™
- D Dynasty Warriors™™
- M Machine Hunter™™
- R Rage Racer™
- M MDK™
- T Thunder Truck Rally™™
- C Codename: Tenka™™
- N NBA ShootOut '97™
- R Rally Cross™™
- P Pitfall™ 3D



NTSC U/C

SCUS-94176  
94176



**WARNING: READ BEFORE USING YOUR PlayStation™ GAME CONSOLE.**

A very small percentage of individuals may experience epileptic seizures when exposed to certain light patterns or flashing lights. Exposure to certain patterns or backgrounds on a television screen or while playing video games, including games played on the PlayStation game console, may induce an epileptic seizure in these individuals. Certain conditions may induce previously undetected epileptic symptoms even in persons who have no history of prior seizures or epilepsy. If you, or anyone in your family, has an epileptic condition, consult your physician prior to playing. If you experience any of the following symptoms while playing a video game – dizziness, altered vision, eye or muscle twitches, loss of awareness, disorientation, any involuntary movement, or convulsions – IMMEDIATELY discontinue use and consult your physician before resuming play.

**WARNING TO OWNERS OF PROJECTION TELEVISIONS:**

Do not connect your PlayStation game console to a projection TV without first consulting the user manual for your projection TV, unless it is of the LCD type. Otherwise, it may permanently damage your TV screen.

**HANDLING YOUR PlayStation™ DISC:**

This compact disc is intended for use only with the PlayStation™ game console.

Do not bend it, crush it or submerge it in liquids.

Do not leave it in direct sunlight or near a radiator or other source of heat.

Be sure to take an occasional rest break during extended play.

Keep this compact disc clean. Always hold the disc by the edges and keep it in its protective case when not in use.

Clean the disc with a lint-free, soft, dry cloth, wiping in straight lines from center to outer edge. Never use solvents or abrasive cleaners.

**HINT LINE**

Hints are available:

Within the US: **1-900-933-SONY** (1-900-933-7669)  
\$0.95 per minute pre-recorded information  
\$1.15 per minute live representative assistance  
\$4.95 - \$9.00 for tips by mail  
\$5.00 - \$20.00 for card refresh

Within Canada: **1-900-451-5757**  
\$1.25 per minute - pre-recorded information

For US callers, game counselors are available Monday-Friday, 8AM-6PM, Pacific Standard Time. Automated support is available 24 hours a day, 7 days a week.

In Canada, automated support is available 24 hours a day, 7 days a week. Live support is not available at this time.

This hint line supports games produced by Sony Computer Entertainment America. No hints will be given on our Consumer Service Line. Callers under 18 years of age, please obtain permission from a parent or guardian before calling. This service requires a touch-tone phone.

**CONSUMER SERVICE/TECHNICAL SUPPORT**

1-800-345-SONY  
(1-800-345-7669)

Call this number for help with technical support, installation or general questions regarding the PlayStation™ game console and its peripherals. Representatives are available Monday-Friday, 8AM-6PM Pacific Standard Time.

**PLAYSTATION ON-LINE** <http://www.playstation.com>

Our news is always hot! Visit our website and find out what's happening – new titles, new products and the latest information about the PlayStation™ game console.

**TABLE OF CONTENTS**

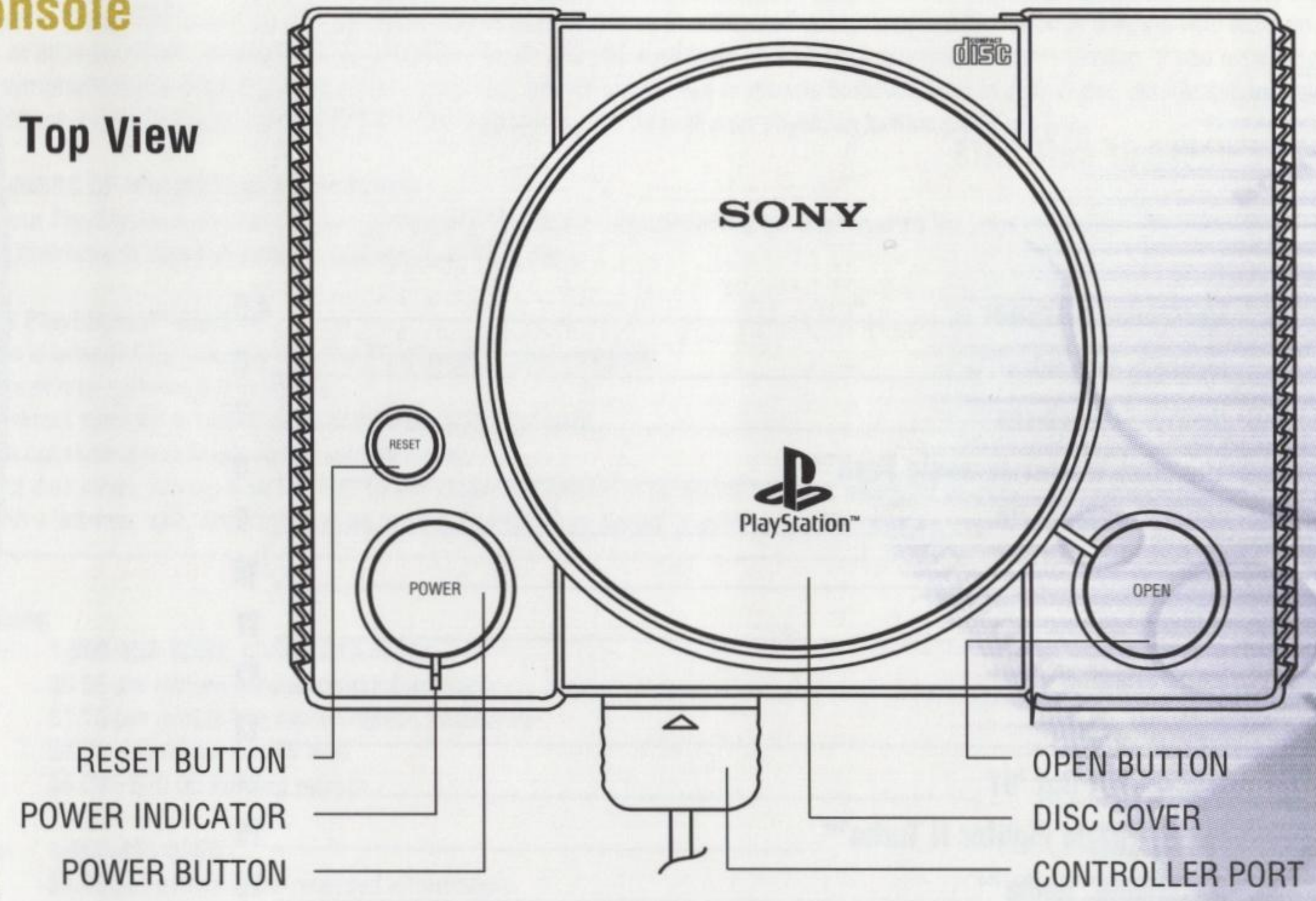
<b>Controller Diagram</b>	4,5
<b>Dynasty Warriors™</b>	6
<b>Herc's Adventures™</b>	7
<b>The Lost World: Jurassic Park™</b>	8
<b>Machine Hunter™</b>	9
<b>MDK™</b>	10
<b>Pitfall™ 3D</b>	11
<b>Rage Racer™</b>	12
<b>Rally Cross™</b>	13
<b>NBA Shoot Out '97</b>	14
<b>Super Puzzle Fighter II Turbo™</b>	15
<b>Codename: Tenka™</b>	16
<b>Thunder Truck Rally™</b>	17
<b>Wild Arms™</b>	18
<b>Ogre Battle™</b>	18





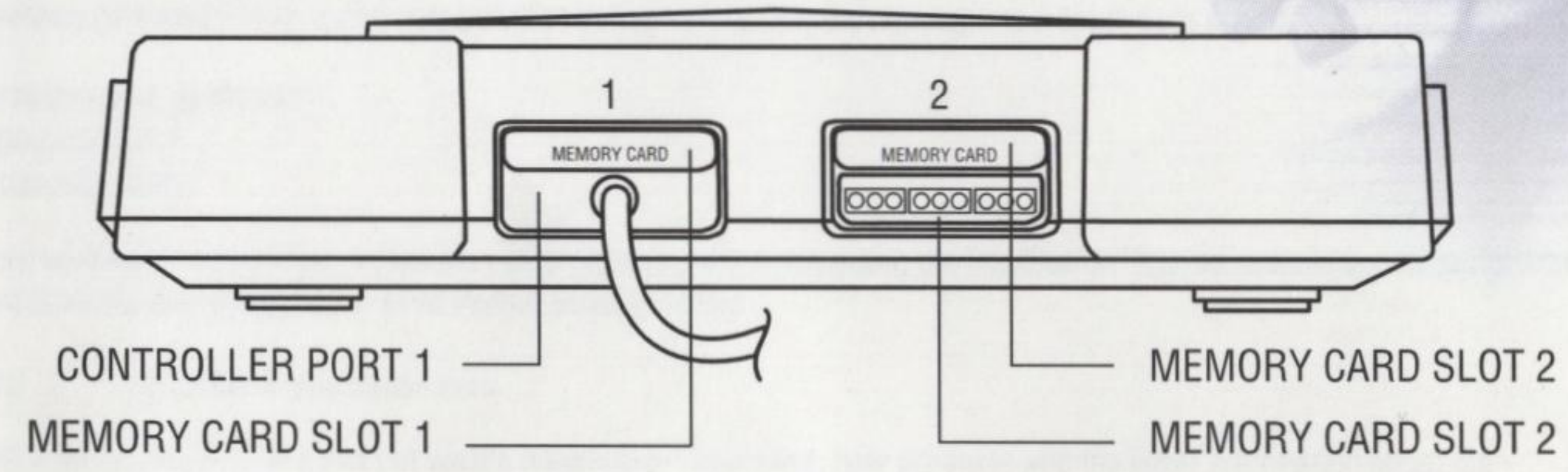
# Console

## Top View



RESET BUTTON  
 POWER INDICATOR  
 POWER BUTTON  
 OPEN BUTTON  
 DISC COVER  
 CONTROLLER PORT

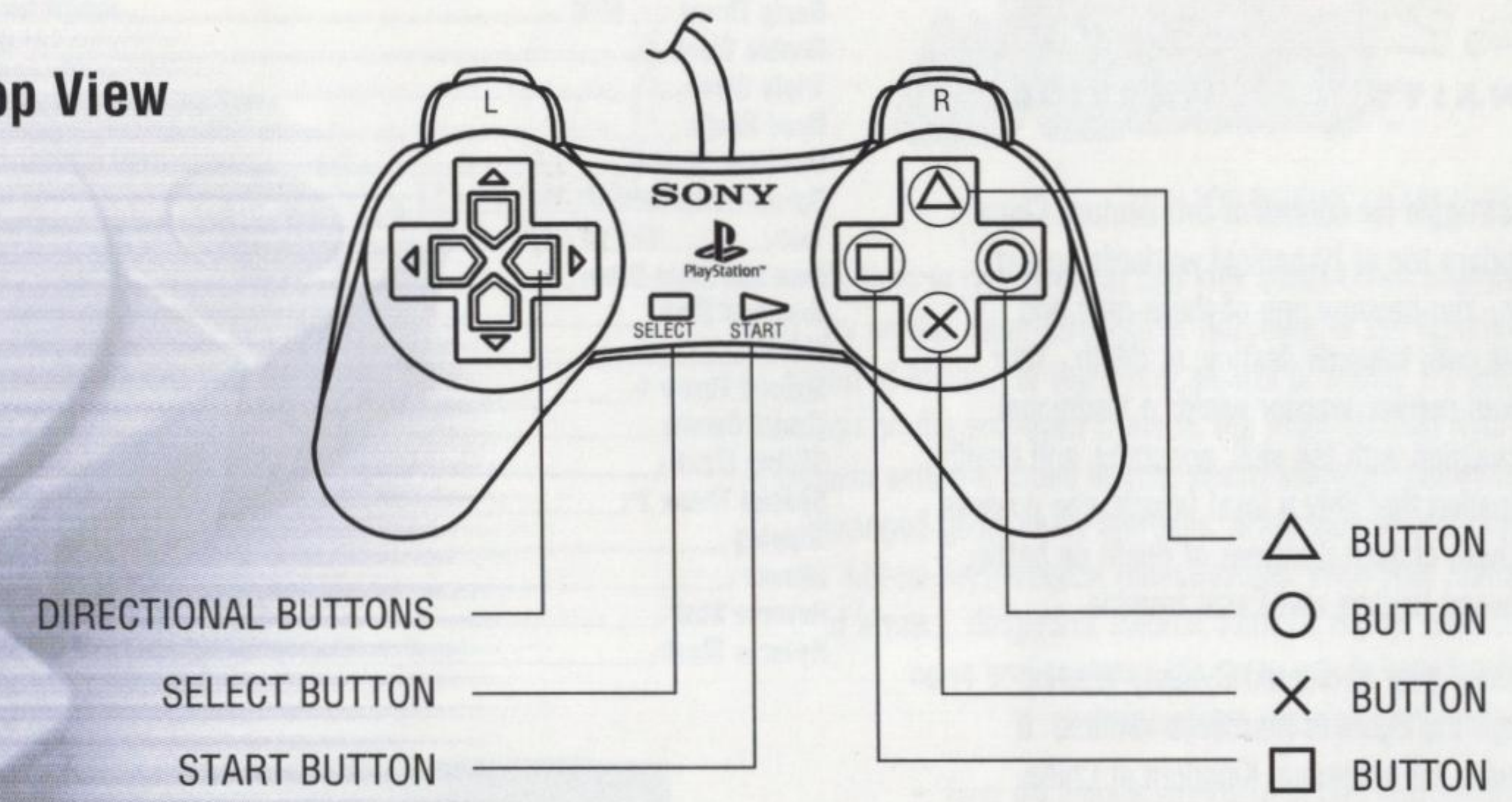
## Front View



CONTROLLER PORT 1  
 MEMORY CARD SLOT 1  
 MEMORY CARD SLOT 2  
 MEMORY CARD SLOT 2  
 MEMORY CARD SLOT 2

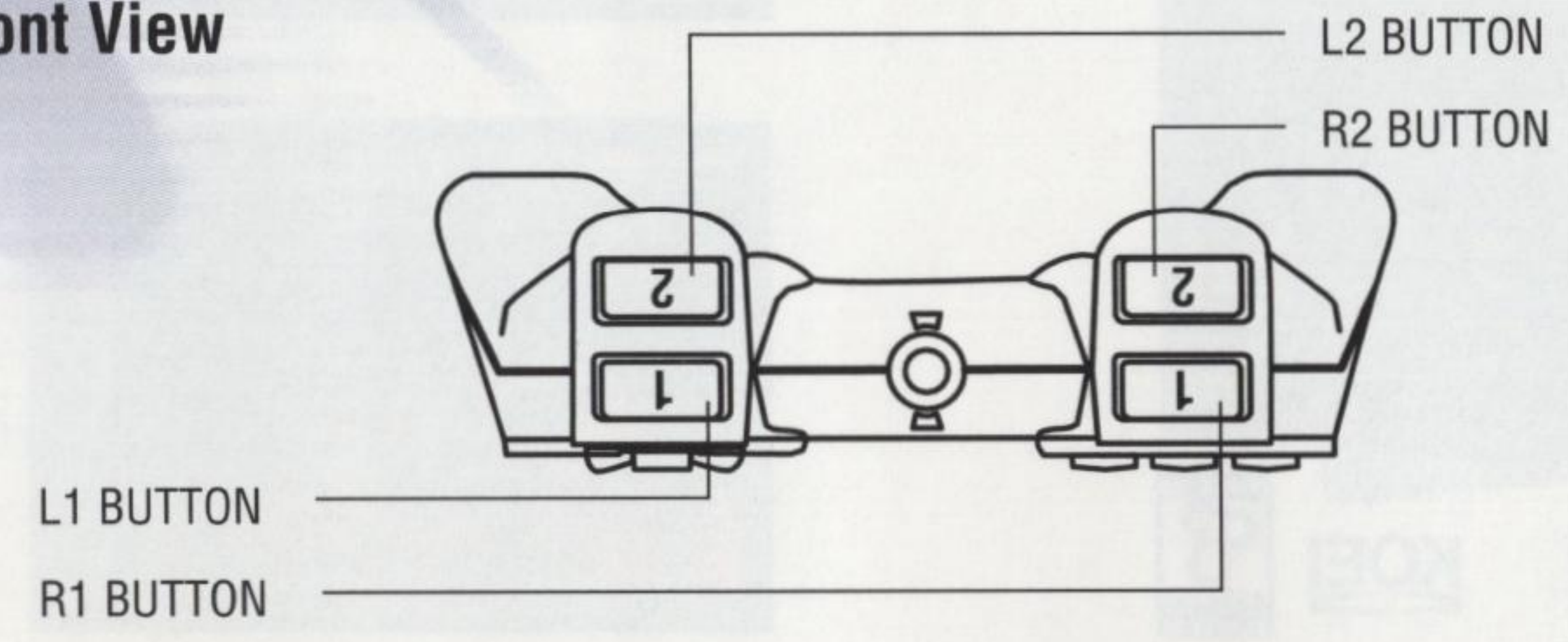
# Controller

## Top View



DIRECTIONAL BUTTONS  
 SELECT BUTTON  
 START BUTTON  
 △ BUTTON  
 ○ BUTTON  
 × BUTTON  
 □ BUTTON

## Front View



L1 BUTTON  
 R1 BUTTON  
 L2 BUTTON  
 R2 BUTTON



# 三國無雙 DYNASTY WARRIORS™

The titanic struggle for control of 3rd century China pits a legendary trio of tyrannical warlords against each other. You become one of these men and assume his path towards destiny, or death. Your hand picked maniac warrior wields a traditional ancient weapon with the skill, accuracy, and deadly determination that only a loyal fanatic can possess. When these chosen devotees of death do battle, all between Heaven and Earth tremble.

Command your dedicated Dynasty Warrior through the rigors of merciless combat. If you win, the enormous Kingdom of China is yours to rule.



KOEI



ACTION	BUTTON
Pounce Attack	↑+□
Basic Throw	□+△
Double Slash	□+□
Triple Slash	□+□+□
Quad Slash	□+□+□+□
Up-down Combo	□+↓+□
Up-up-down Combo	→□+□+↓+□
Toss	↘+□
Toss and Slam Down	↘+□+□
Toss and Stab	↓+↘+→+□
Thrust	→+→+△
Special Throw 1	←+↘+↓+↘+→+□
Thrust Combo	□+□+△+△
Sliding Slash	←+□
Special Throw 2	←+□+△
Tripping	(While crouching) ↘+□
Skewer	(Leg Sweep) +□
Reverse Stab	(While crouching) →+△
Reverse Slash	(Reverse Stab) +□



ACTION	BUTTON
Basic Attack	□
Special Attack	Hold □
Jump	×
Run	△
Uses Left Inventory Item	L1
Uses Special Item	R1
Cycle through Inventory of Items	L2 + R2 (Seperately)
Pauses Games, Show Map	Start Button

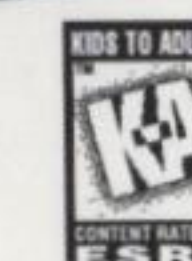


# HERCULES' ADVENTURES™

## INFLICT MYTHICAL MAYHEM!

It's time to get mythical and kick some Greek monster butt. Try on the super-strength of Hercules, or the lightning speed of Atlanta, or the street smarts of Jason. It's open season on the one-eyed Cyclops, the multi-headed Hydra, Medusa with the snake hairdo, sword-swinging skeletons, deranged gods, nasty Martians, crazy clowns and other not-so-mythological monstrosities. With your arsenal of arrows, slingshots, swords, houses, sheep, inflatable cows and ray guns it's up to you to save ancient civilization from massive myth-fortune.

- Over 40 unique worlds of action and adventure
  - Single or two-player cooperative mode
  - Choose to be Hercules, Atlanta or Jason and become faster and stronger as you play
  - A multitude of creatures and weapons of mythic proportions



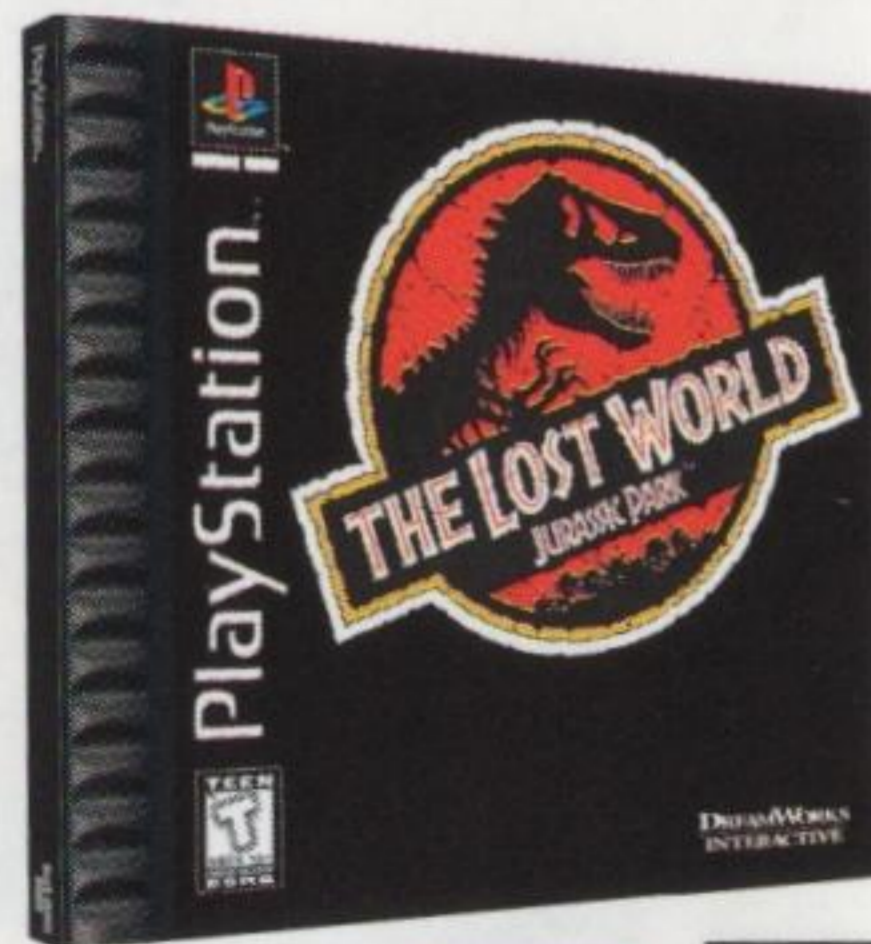




Prepare to be amazed, and probably devoured, while you dive into the continuing escalation of chaos in The Lost World: Jurassic Park. Things have gotten out of control and 20 angry dino species, driven by hunger and rage, are stalking you. The hunt is on as you control a series of humans and dinosaurs - including the awesome T-Rex.

Showcasing the all new Morph-X technology and driven by a great soundtrack, this action thriller is everything you'd expect from DreamWorks; fast, engaging, cinematic, and more lifelike than anything you've ever seen.

Can you survive?  
The Lost World: Jurassic Park.



### DINOSAUR

ACTION	BUTTON
Start	Pause
Look up	↑
Move/Run right	→
Duke	↓
Move/Run left	←

#### WHEN STANDING

Not Used	○
Attack	□
Defensive	△
Jump	×

#### WHEN RUNNING

Flying Kick	○
Running Bite	□
Evade Spin	△
Running Jump	×

#### WHEN LOOKING UP

Kick up	○
Bite up	□
Evade up	△
Jump	×

#### WHEN DUCKING

Slide	○
Not sure	□
Roll	△
Not used	×

### HUMAN

ACTION	BUTTON
Start	Pause
Look up	↑
Move/Run right	→
Duke	↓
Move/Run left	←
Cycle between weapons	L2, R2

#### WHEN STANDING

Not used	○
Fire Weapon	□
Block	△
Jump	×

#### WHEN RUNNING

Flying Kick	○
Fire Weapon	□
Running Slide	△
Running Jump	×

#### WHEN LOOKING UP

Not used	○
Fire up	□
Jumping Flip	△
Jump	×

#### WHEN DUCKING

Not used	○
Fire Weapon	□
Block Low	△
Not used	×

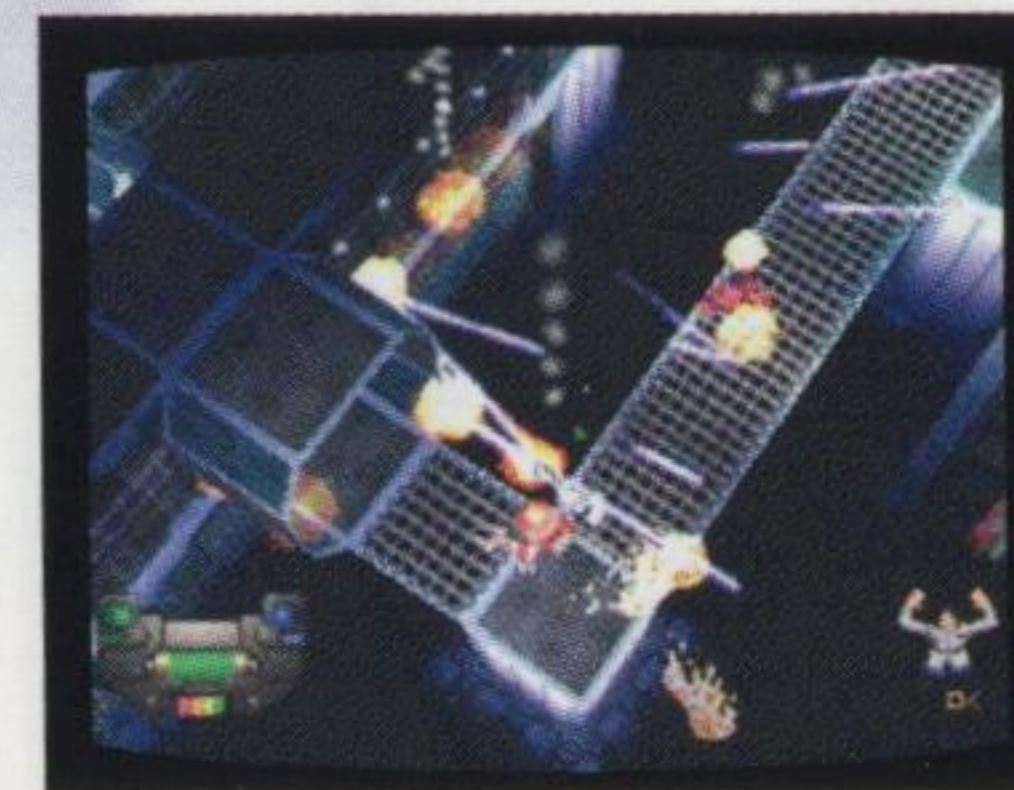
### ACTION

#### D-PAD

Move up	↑
Move up and right	↑/→
Move right	→
Move right and down	→/↓
Move down	↓
Move left and down	↓/←
Move left	←
Move left and up	←/↑

#### WEAPONS

Primary weapon fire up	△
Primary weapon fire right	○
Primary weapon fire down	×
Primary weapon fire left	□
Pause game	START
Strafe	L1
Activate secondary weapon	L2
Weapon select	R1
Map on/off	R2



### BUTTON

# MACHINE HUNTER™

9

Some kill for sport. Some kill for glory.  
You kill to survive.

When you're being stalked by murderous mechanical droids and other enemies that resemble rats, scorpions and giant roaches through 3-D environments like a pulsating power station, a bizarre alien city, a laboratory of nightmares, or a labyrinthine city sewer, killing is what you live for. But after you torch a droid the real fun begins, because you get to incorporate all it's special deadly powers into your own arsenal of devastating firepower, leaving its burnt tin carcass behind.

Droid season is here and you've become the Machine Hunter.



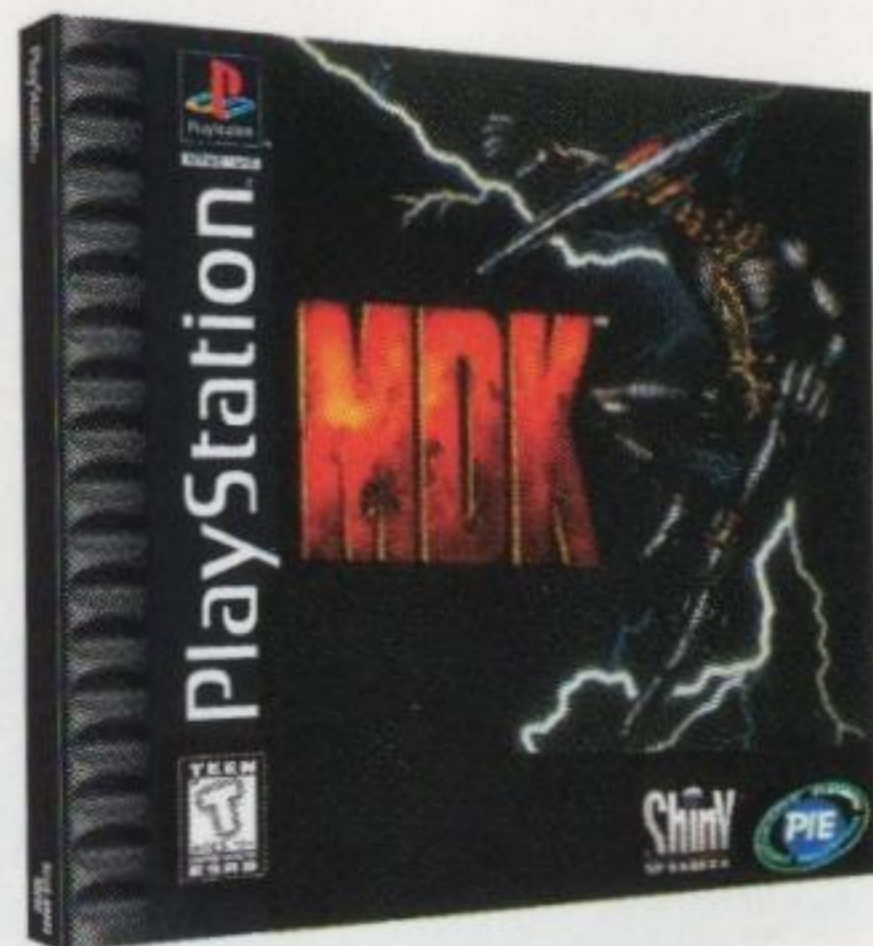


# MDK™

MDK: IT THINKS, THEREFORE IT KILLS.

One of the most anticipated games of the year, MDK completely redefines the action gaming experience. With the never-before-seen "Sniper Mode", you'll zoom in and pick off enemies from over two miles away. Battle through 60 arenas packed with advanced "smart enemies" that think, listen and communicate in a calculated assault on your life.

That's why Game Fan Magazine called MDK "one of the most innovative games ever created!"



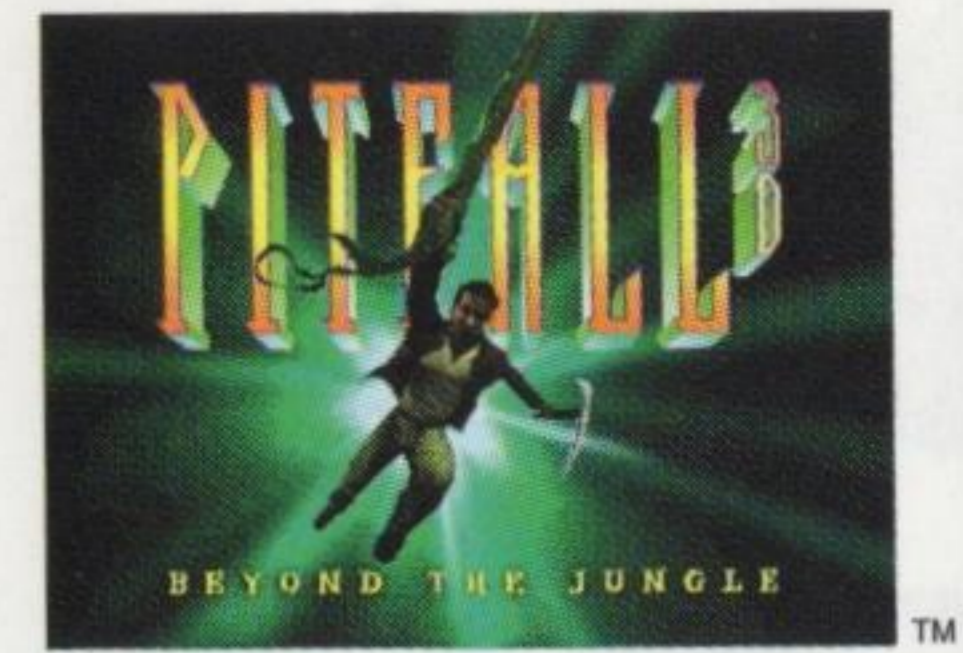
ACTION	BUTTON
Moves Kurt forward, backward, left and right	D-pad
Fire Weapon	○
Use item (Nuke Bomb, Dummy Decoy, etc.)	□
Jump	X
Look up	L1
Look down	L2
Strafe	R1
Begins demo or resets it to title screen	START
Toggles in and out of Sniper Mode	SELECT

### WHEN IN SNIPER MODE

Moves crosshairs up, down, left and right	D-pad
Fire Sniper rifle	○
Zoom out	L1
Zoom in	L2

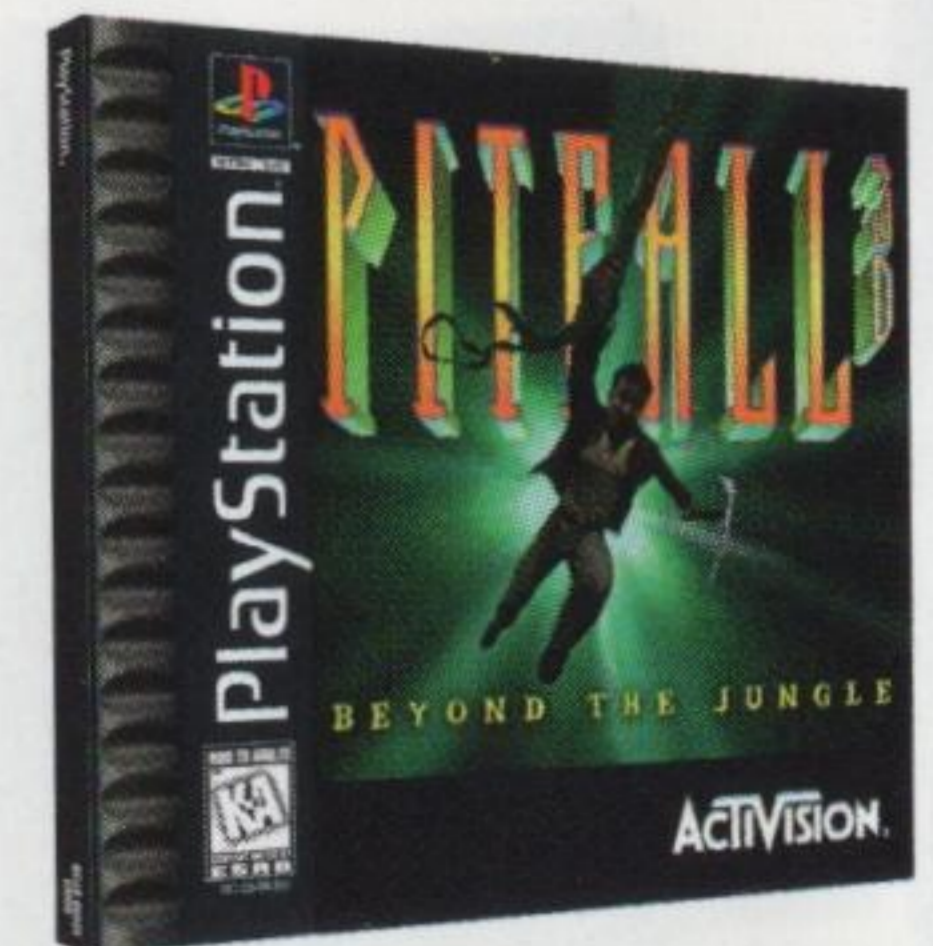


ACTION	BUTTON
Start/Pause	START
Left	←
Right	→
Into the Screen	↑
Out of the Screen	↓
Crouch	X
Attack	○
Jump	△
Use Power up	



While exploring deep jungles of South America, you pass through a dimensional rift and enter a strange and dangerous world. Encounter the ancient Moku civilization, which has been decimated by a Dark Lord whose next target is Earth. You must rescue the beautiful rebel leader and defeat the Dark Lord's army of evil creatures to prevent chaos and destruction.

Swing on vines across deadly pits, avoid crocodiles and scorpions, leap across treacherous chasms, and take on lethal enemies. Go beyond anything you've ever experienced. Go beyond the jungle...In Pitfall 3D.



ACTIVISION







Speed around winding mountain tracks, down steep grades and through dark tunnels on the most radically challenging race courses ever designed.

Compete and win in several classes on different courses to win prize money, upgrade your raging fast road machine and earn a place in a more challenging field of advanced competitors.

Customize your hard charging racer to give you added advantage on each course and enable you to battle it out against other drivers for the checkered flag, and a spot in the main Gran Prix event at the season's climax.

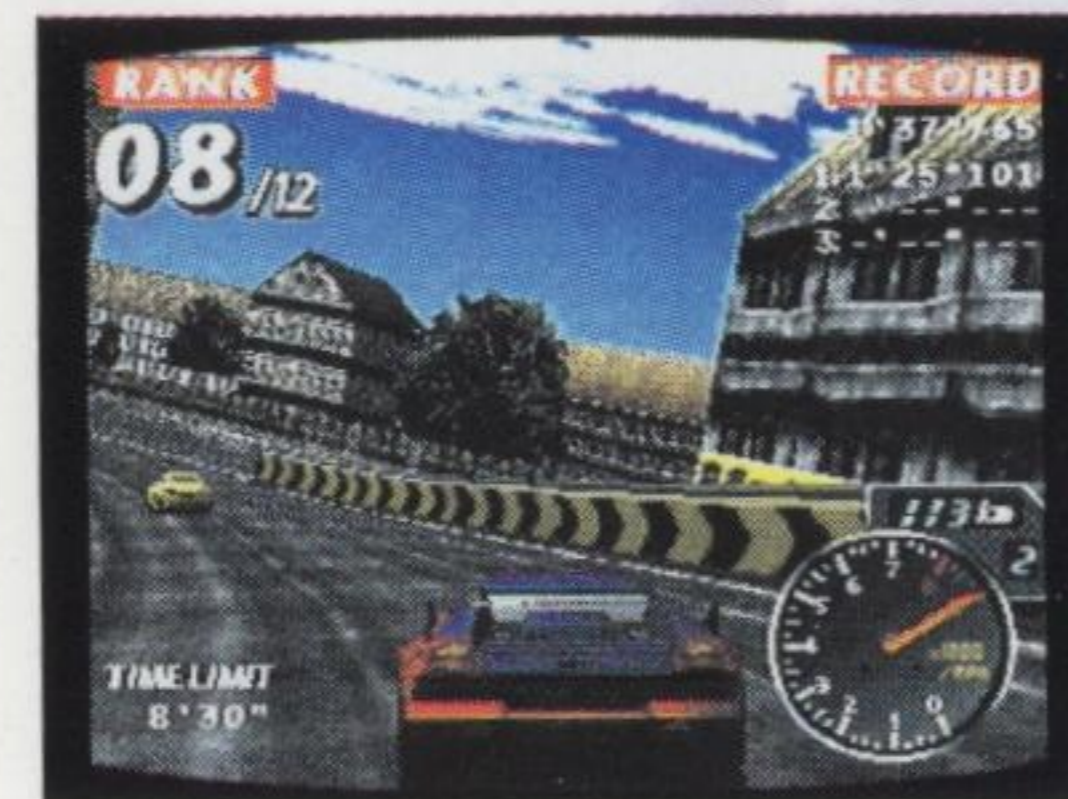
This is white knuckle racing at its best.



namco®

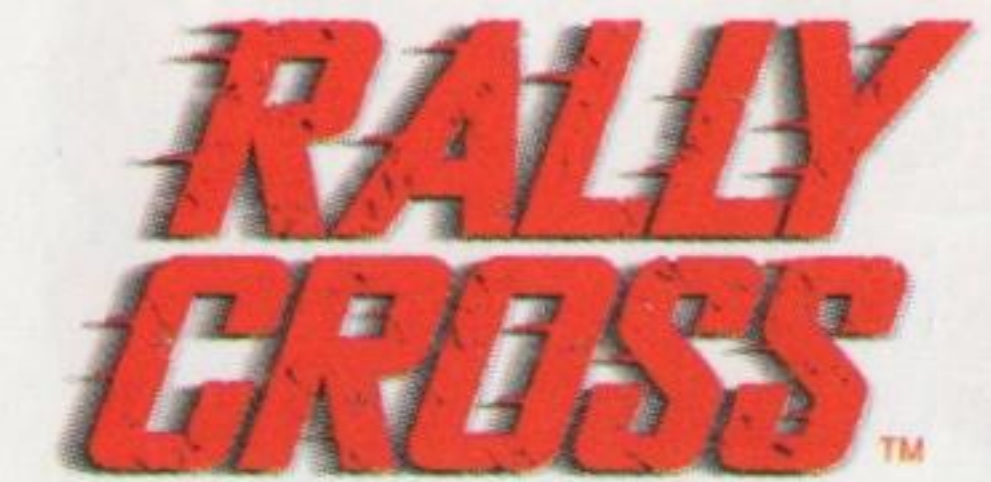


ACTION	BUTTON
Turn right	→
Turn left	←
Confirm menu selections	START
Pause or uppause game	START (during gameplay)
Shift up (manual transmission)	R1 and R2
Shift down (manual transmission)	L1 and L2
Change views	←
Select menu options	○
Accelerate	X
Brake	□
Cancel selections	□



ACTION	BUTTON
<b>GAME CONTROLS</b>	
Throttle	X
Brake/Power Slide	□
Clutch	△
Rear View	○
Shift Down	L1
Shift Up	R1
Rock Left	L2
Rock Right	R2
Turn Left/Right	←/→
Pause/Options	START

<b>INSTANT REPLAY CONTROLS</b>	
Switches view to another car	L2/R2 Button
Slow Motion	←
Fast Replay	→
Pause Replay	↓
Rear View	○
Exit Replay	X



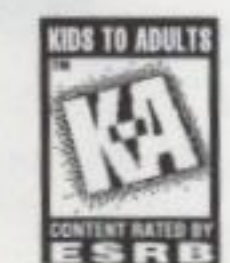
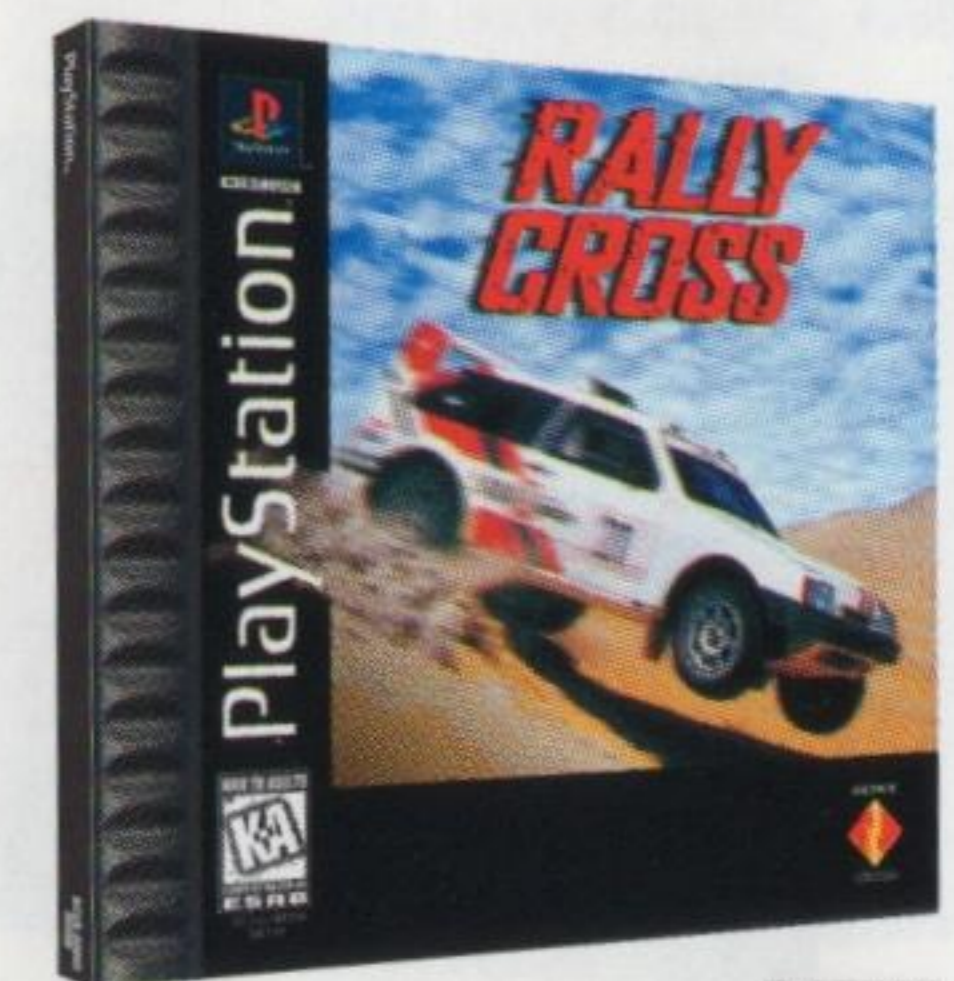
You wanna talk dirty? Say Rally Cross.

Select from 20 rally cars and trucks, each with different traction, speed, handling and acceleration.

Slam through, plow over and skid across every natural inconvenience on six challenging courses.

But don't worry, you're not alone. Other ultra aggressive drivers out there are anxious to force your radical 4x4 into a tree, over a cliff, through a brick wall, or down a raging muddy river.

It's your world and you have a right to drive over it.





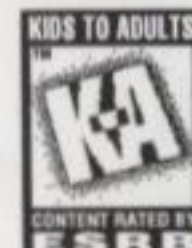
# NBA SHOOT OUT '97

Pump fake, between the legs dribble, speed burst, call for a cutter, and dish the rock for an awesome tomahawk jam.

If you know what that means then it's time to run with the pros in NBA Shoot Out '97. These guys are hot! All 29 NBA teams, the players you know, the moves you wish you could make...it's all there, and more. Really.

There are so many great moves and quick action in this smokin' hoopfest that it might be a good idea to tape your thumbs. We're talkin' steals, fast breaks, revolutionary ICON PASSING™ and award winning slam dunks that make this the ultimate NBA simulation.

Got an itch for great hoops? Take it to court with NBA Shoot Out '97.



## ACTION BUTTON

### INBOUND PASS

- Pass → ○
- Tap to cycle thru teammates to pass to → X

### OFFENSE

- Shoot X + D-Pad away from basket gives you a fade jumper → X
- Pass → ○
- Speed Burst (when moving) → □
- Pump Fake (when stationary) → □
- Special Moves → △
- Dunk → □ + X
- Mid-air Pass → X + ○

**Alley-Oop** Using **ICON PASSING™** double tap and hold icon (X, ○, △, □) to take control of the cutter. Move the cutter toward the basket and release the icon.

- Closest Man to basket cuts → L1
- Closest Man to ball cuts → R1
- Cycle through offensive plays → L1
- Bring up passing icons → L2

### ICON PASSING™

Double-tap icon for a "quick" shot. (First press passes to teammate, second press shoots.) Double-tap and hold icon to set up a pass while you control the cutter, then release the icon to receive pass. Press icon and hold for a "give and go."

### REBOUND

After the shot, press ○ to take control of the man closest to the basket.

### DEFENSE

- Attempt Steal → X
- Switch to closest Defender/Hold for closest man under the basket → ○
- Jump to Block Shot or Rebound → △
- Speed Burst → □
- Cycle thru Defensive plays → R2
- Intentional Foul → R1+L1

### INSTANT REPLAY

- Rewind/Forward → L2/R2
- Slow Motion → L2+R2

### MOVING THROUGH THE MENUS

- Highlight items/teams → D-Pad
- Select highlighted item/Cycle through options → X
- Return to previous screen → △
- Pause Game/Resume Game → START

## ACTION BUTTON

- Starts Game → START
- Pauses Game → START
- Joins in for second player → START

- Taunts Opponent (once per round) → SELECT
- Opens Menu During Pause → SELECT

- Selects Game Mode (see Little Screen) → [D-Pad]
- Changes Settings (see Option Mode) → [D-Pad]

- Drops Gems Faster → ← (During Gameplay)

- Moves Gems Left or Right → ← or → (During Gameplay)

- Selects Item in Menu → X
- Rotates Gem Counter-Clockwise → X

- Selects Item in Menu → ○
- Rotates Gem Clockwise → ○

- Selects Item in Menu → □ or △
- Special Functions (See Street Puzzle Mode) → □ or △

- Not Used → L1, R1, L2, R2

- Reset Game → Hold SELECT  
Hold START



# PUZZLE FIGHTER II TURBO

Super Puzzle Fighter II Turbo is an irresistible and addictive game of fast-paced strategy. It's the award-winning puzzle game... with attitude!

One or two players struggle in a fiercely competitive head-to-head battle combining the classic characters from Street Fighter Alpha 2 and Night Warriors. Opponents compete by stacking gems in strategic patterns and color combinations. Special 'Crash Gems' are dropped on foes to weaken them. With combination and counter attacks, an intense contest ensues until one player is overwhelmed in a final K.O.

"... this is a fantastic puzzle game ... you just won't be able to stop."

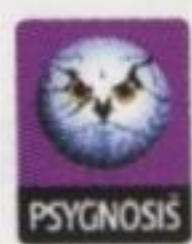
\*\*\*\* Next Generation, Oct. 1996





# CODENAME TENKA™

As you stare down the barrel of a laser guided polymorphic repeating firearm and blast away at ruthless, genetically-mutated, bionic enforcers, do you ever wonder whose footsteps you hear behind you? Don't ponder it for more than a millisecond or you'll be a withered slice of smoking toast. Hideous soldiers of death, without compassion or pixalation, are stalking you through miles of multi-directional walkways, air ducts and sewers. It's you or them.



ACTION	BUTTON
Move Tenka forwards	↑
Move Tenka backwards	↓
Rotate Tenka left	←
Rotate Tenka right	→
Fire weapon/Use/Select	X
Duck/Crouch	○
Jump	△
Run	□
Display HUD/Select weapon/Interact with object	R1
Strafe-when used with Directional buttons	R2
Look up	L1
Look down	L2

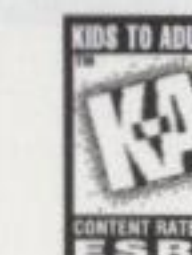
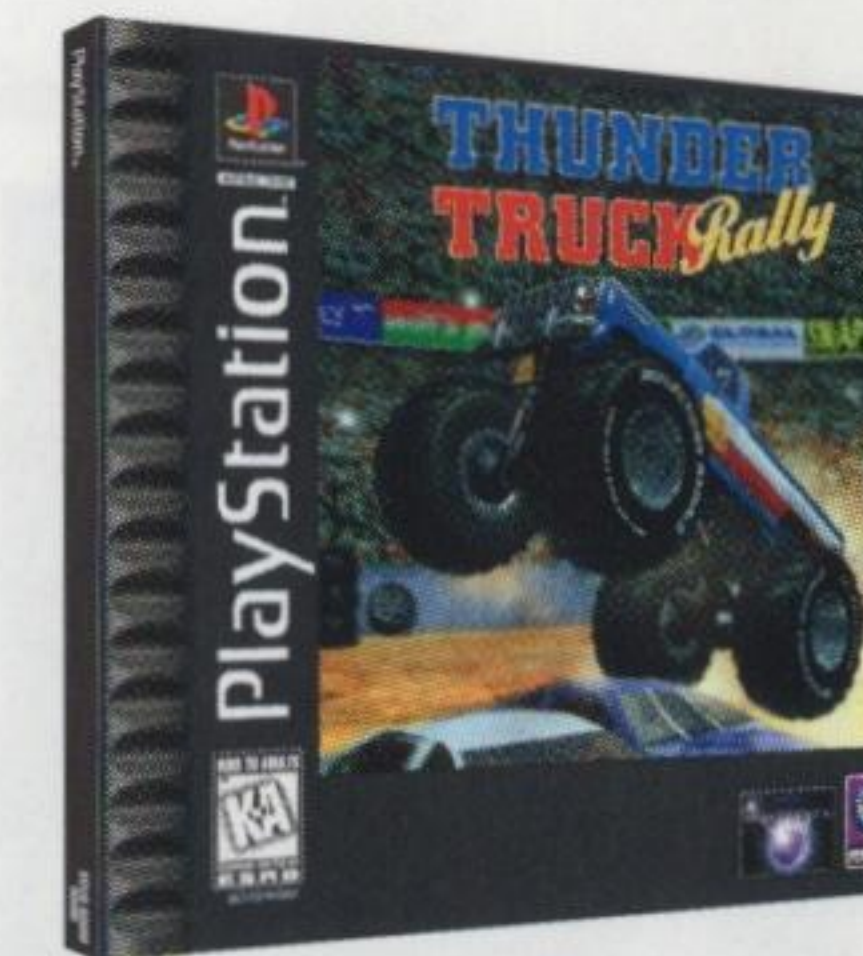
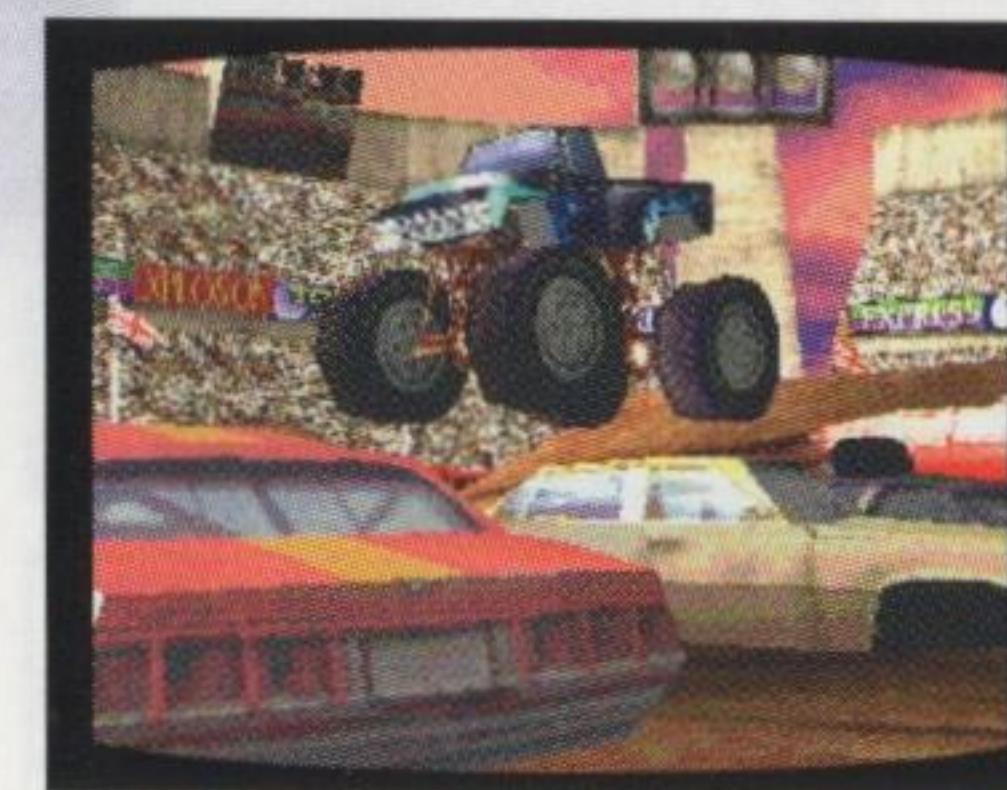


# THUNDER TRUCK Rally™

ACTION	BUTTON
Steer Left	←
Steer Right	→
Accelerate	X
Brake/Reverse	□
Horn	○
Rescue Helicopter (Endurance Mode Only)	△
Change Views	L1
Change Views	R1
Fast Left	L2
Fast Right	R2
Pause	START

Swing aboard a nitro burning beast and charge ahead into a high octane 4x4 rally race! Pick from nine radically different metal monsters as you compete on treacherous landscapes covered with volcanoes, sheer cliff drop-offs, and blizzard swept glaciers.

Hungry for more road rash and diesel spills? Test your bolts in the stunt challenge and car crush arena! Thunder Truck Rally dares you to put your faith and your foot into full-on metal munching mass!



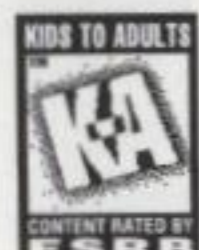
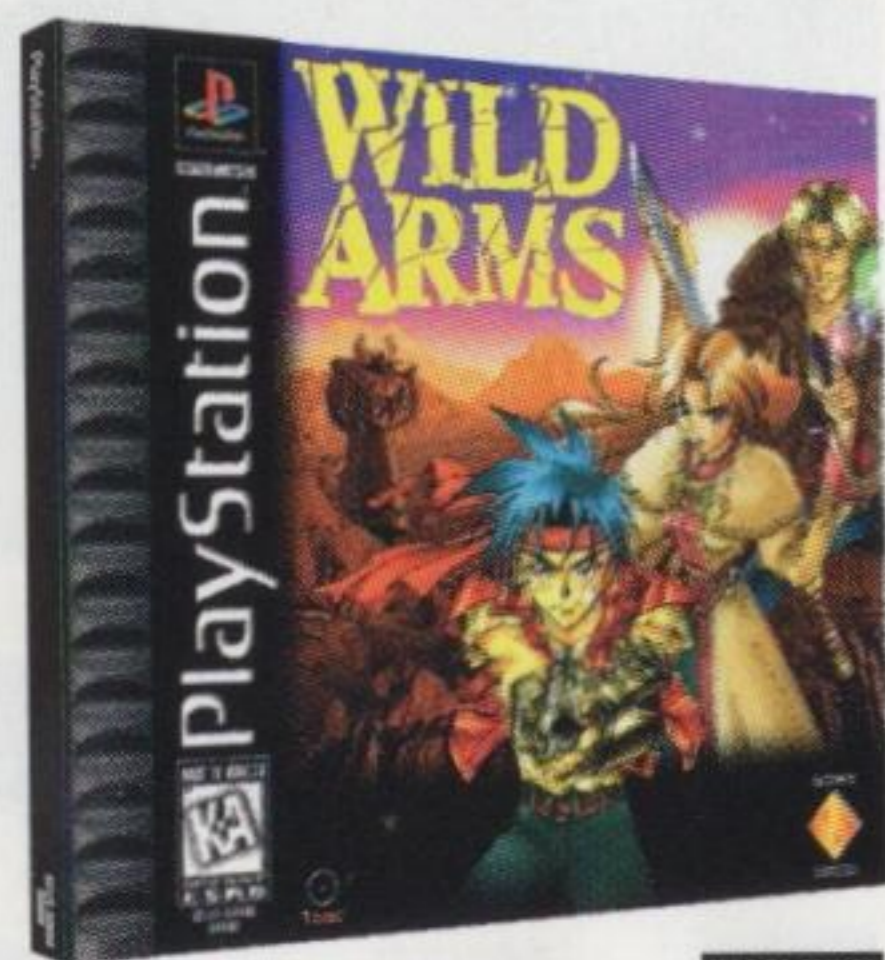


# WILD ARMS™

1,000 years ago in a peaceful land protected by mythic Guardians, a race of Metal Demons launched a merciless attack for control of the realm. The attackers were narrowly defeated, and the battle left a devastated wasteland.

Three warriors now hear the call of the weakened Guardians. Filled with faith and courage, the warriors will plunge into the wastelands on a quest for ancient relics that may save this brave new world—a world where legends become reality.

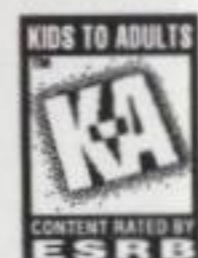
Boasting an action-packed, interactive world, engaging 3D combat and three unique characters, Wild Arms delivers hours of intense discovery and gameplay.



# Ogre Battle™

The tranquility of a fertile and peaceful continent becomes stained with the blood of warring factions when a friend of the king goes mad and assassinates him. As a warlord and leader you must struggle against tyranny and betrayal to organize your forces and save the empire.

Ogre Battle uses traditional elements of overhead view military strategy games, the chance element of special tarot card readings, and hand to hand combat action with supernatural weapons to play out the battle between good and evil.



**Producer:** Gary Barth

**Project Coordinator:** Anne Chen

**Creative Services:** Kim Hornecker

**Product Marketing:** Michelle Vercelli/Yvonne Smith

**Intro Video:** Frontline Productions

**Sampler Interface:** Lifelike Productions Inc.

**Artwork:** Radar Design Corp.

**Some non-Sony controllers may not function properly with this JamPack Vol. 1 Sampler Disk.**

Sony Computer Entertainment logo is a trademark of Sony Corporation. PlayStation and the PlayStation logos are trademarks Sony Computer Entertainment Inc. NBA Shoot Out is a trademark of NBA Properties, Inc. The NBA and individual NBA Team identifications used on or in this product are trademarks, copyrighted designs and other forms of intellectual property of NBA Properties, Inc. and the respective member Teams and may not be used, in whole or in part without the prior written consent of NBA Properties, Inc. © 1997 NBA Properties, Inc. All rights reserved. All games featured in this product are trademarked and copyrighted properties of their respective publishers and/or their licensors.

JamPack Vol.1 © 1997 Sony Computer Entertainment America Inc.

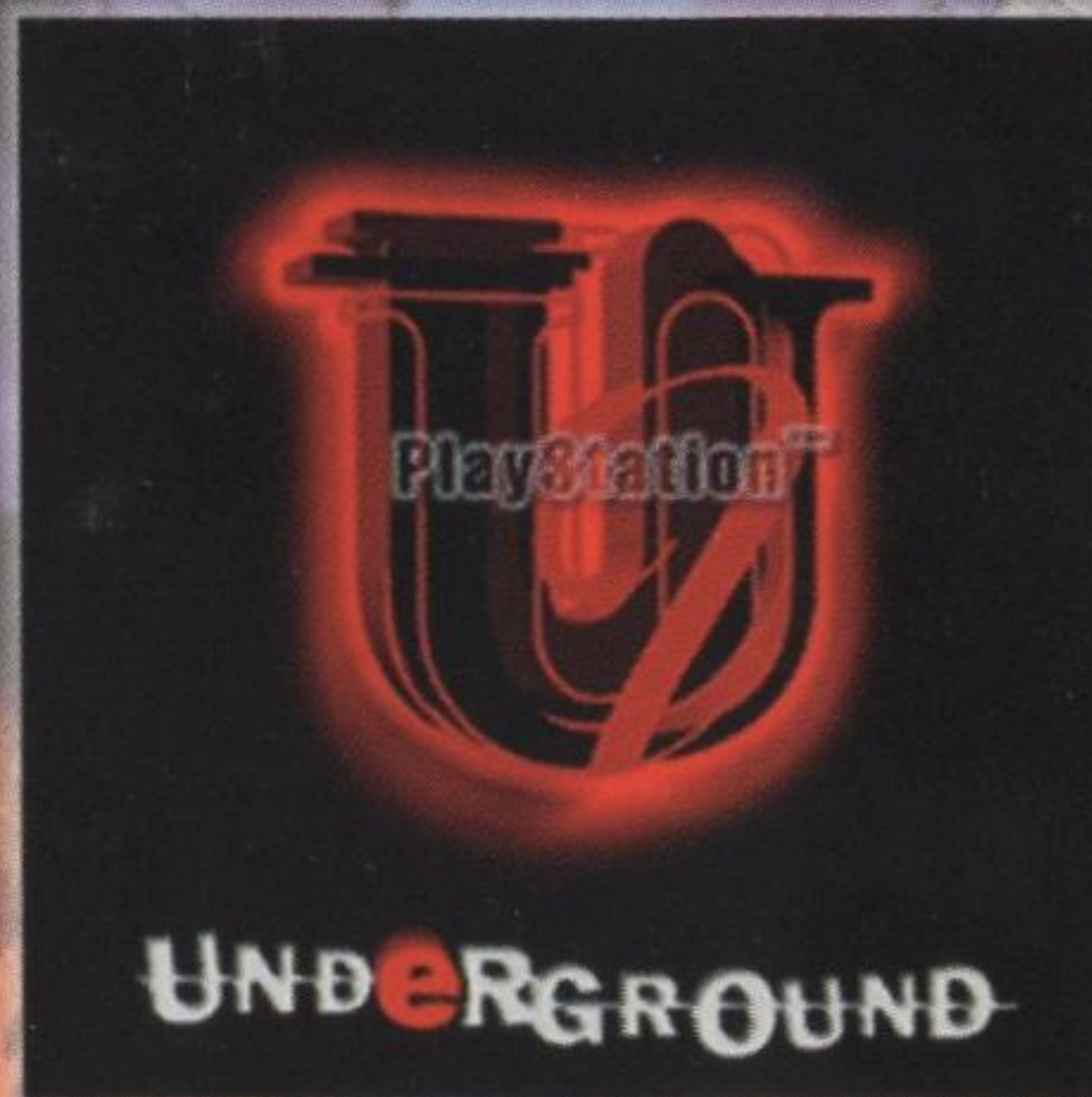


# Get the NEW PlayStation™ Underground™ CD Mag NOW!

BEING JUST ANOTHER GAMER BLOWS.  
That's why we created the new PlayStation  
Underground CD Mag. Four dual-CD issues  
designed to take hard-core gamers to the *extreme*.

Just \$29.95 gets you:  
8 discs - over 5.2 gigs - each  
jam-packed with:

- » interactive game demos
- » hints and tips
- » behind-the-scenes video
- » exclusive codes you want



U  
R  
N  
O

..... It's stuff you can't get anywhere else. It's intense.  
And it's only from the PlayStation Underground.

Don't miss out - call **1-800-983-SONY (7669)** to  
subscribe to the new PlayStation Underground CD Mag TODAY.



Sony Computer Entertainment logo is a trademark of Sony Corporation. PlayStation and the PlayStation logos are trademarks of Sony Computer Entertainment Inc. URNOTE is a trademark of Sony Computer Entertainment America Inc. Underground™/© 1997 Sony Computer Entertainment America Inc.

